



Report to Children, Young People and Family Scrutiny & Policy Development Committee Monday 21st November 2016

Report of: Dawn Walton, Acting Director, Children, Young People and families Service

Subject: Support and services for young carers, with reference to the requirements of the Children & Families and Care Act

Author of Report: Nicola Shearstone, Acting Head of service, Children, Young People and Families
Sara Gowen, Managing Director, Sheffield Young Carers

Type of item: The report author should tick the appropriate box

Reviewing of existing policy	<input checked="" type="checkbox"/>
Informing the development of new policy	<input type="checkbox"/>
Statutory consultation	<input type="checkbox"/>
Performance / budget monitoring report	<input type="checkbox"/>
Cabinet request for scrutiny	<input type="checkbox"/>
Full Council request for scrutiny	<input type="checkbox"/>
Community Assembly request for scrutiny	<input type="checkbox"/>
Call-in of Cabinet decision	<input type="checkbox"/>
Briefing paper for the Scrutiny Committee	<input type="checkbox"/>
Other	<input type="checkbox"/>

The Scrutiny Committee is being asked to:

Understand Sheffield's support and services for young carers, with reference to the requirements of the Children & Families and Care Act.

Please see recommendations on page 6-7

Background Papers:

- Children and Families Act 2014
- Carers and Young Carers Strategy 2016-2020
- Young Carers' Multi-Agency Action Plan
- Sheffield Young Carers Annual Report 2015-2016
- Sheffield young carer assessment

Category of Report: OPEN

Report of the Director of Children, Young People and Families

Title of report – What progress has been made in implementing the Children and Families Act 2014 for young carers?

1. Introduction/Context

1.1 The Children and Families Act 2014, which came into force in April 2015, significantly strengthens the rights of young carers. Previously under law, a young carer was entitled to an assessment of their needs, however assessments had to be requested and young carers had to be providing or intending to provide a substantial amount of care on a regular basis. This approach was not preventative and meant that young carers and their families had to be aware of their services and rights and ask for support. The new Act brought in the following changes:

- Extension of the right to an assessment of needs for support to all young carers under the age of 18 regardless of who they care for, what type of care they provide or how often they provide it.
- A clearer duty to assess young carer's needs based on the appearance of need (or request) to assess a young carer's needs for support – young carers will no longer have to request an assessment or be undertaking a 'regular and substantial' amount of care.
- Appropriate links between children's and adults' legislation to enable local authorities to align the assessment of a young carer with an assessment of an adult or child they care for.

In addition a Local Authority is required to:

- Involve young carers, their parent/s and any person whom the young carer or parent of the young carer requests when carrying out a young carer's needs assessment.
- Consider whether it is appropriate for the young carer to provide or continue to provide care, in light of the young carer's needs for support, other needs and wishes.
- Provide a written record of the assessment to the young carer, the young carer's parents or any person who the young carer or parent requests receives a copy.
- Take reasonable steps to identify the extent to which there are young carers within their area who have needs for support

Local Authorities must meet the need for support by:

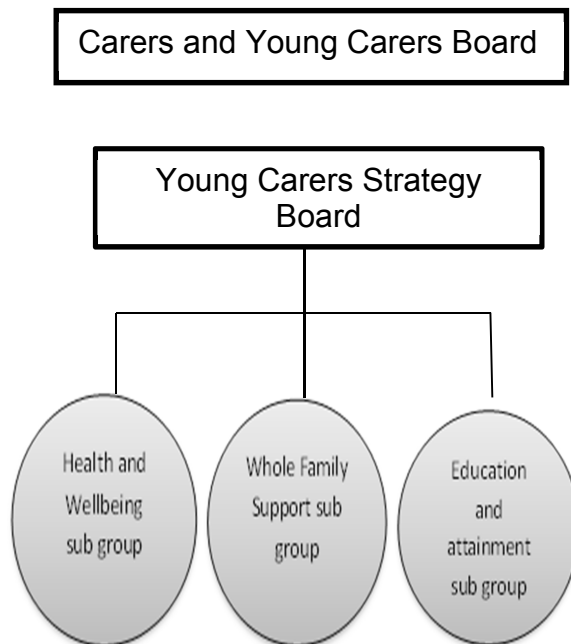
- Considering whether a young carer’s needs for support can be met through services which may be provided under section 17 (to the young carer and/or any member of their family) and;
- Whether a young carer’s needs can be met by providing support to the person who is being cared for by the young carer.

The legislation provides a clear framework for Local Authorities to take a whole family approach to assessing and supporting young carers and delivering support in a coordinated way, so that children and young people at risk of undertaking inappropriate caring roles are identified and protected.

2. Progress against the requirements of the Act

2.1 Sheffield Local Authority and Sheffield Young Carers work closely together, through a commissioning arrangement, to ensure support and services are provided for children and young people who have a caring responsibility for someone with a mental or physical illness, a disability and/or substance misuse issues.

The young carers’ agenda is currently supported through the Young Carers Strategy Board.



The sub groups have each considered their ability to impact on the requirements of the Children and Families Act 2014.

Sheffield’s Young Carers Multi Agency Action Plan, developed and supported by the sub groups, reflects the requirements of the legislation as follows:

Detailed Objectives	Intended Outcomes
<p>Promotion of, and adherence to, legislation affecting young carers (Care Act, Children and Families Act, Rights of the Child). Young Carer Participation – young people’s wishes and feelings are listened to and acted upon.</p>	<p>Professionals and young carers are aware of the rights of young carers and the services in place to support them</p> <p>Young carers are knowledgeable about their rights, and entitlement to carers’ assessment and additional support to help reduce the impact of their caring responsibilities</p> <p>Young carers have a voice and have someone on their side</p>
<p>Ensure professionals and partners are trained to recognise and identify young carers when working with families, and offer appropriate support such as young carer assessment</p>	<p>Increased awareness and understanding of the issues faced by and the needs of young carers, and using the young carer assessment in Sheffield</p> <p>Reduction in the number of hidden young carers</p> <p>More support in place for young carers and their families as a whole</p>
<p>Work with commissioners within SCC and partners to ensure young carers have a voice and that this is built into contracts and specifications</p>	<p>Services are accountable to young carers and are designed by, with and for those who access them</p>
<p>Work with schools, colleges, universities, training providers and employers to raise awareness of and actively address issues affecting young carers</p>	<p>Young carers achieve the same or better outcomes as other people their age in relation to education and employment</p>
<p>Ensure young carers are proactively identified and treated as ‘carers’ – GP surgeries, hospitals, school nursing and other</p>	<p>Increase in young carer assessments undertaken in primary care</p>

health workers to identify and recognise young carers	
Explore ways in which young carers could be involved more in the care plans of those they care for	Increase in young carers' involvement in care planning for the person they care for

2.2 The progress to date on these objectives and outcomes are:

- Sheffield has a young carer's assessment designed collaboratively with a range of partners drawn from across the city, with young carers taking a leading role. The assessment was developed as a result of many different conversations, questionnaires, discussions and consultations with young carers. A text version of the assessment for older young people has subsequently been developed following feedback from young adult carers.
- The needs assessment of young carers trigger a needs (re)assessment of the person(s) they care for through the safeguarding adult process.
- There is a protocol in place to ensure that a needs assessment of a parent with care needs triggers a young carer assessment of the child/children
- Young carers are now identified at screening by Children's Social Care and through the early help offer provided by the Prevention and Early Intervention Service. Young carers are also identified during case work by Social Care and the Prevention and Early Intervention Service, as young people do not always immediately identify as a young carer
- The whole family sub group is now starting to involve young carers in monitoring young carer assessments
- There is a young carer champion in the 3 social care areas and in the 3 multi-agency support areas
- The University of Sheffield and the Sheffield Hallam University now have young carers as student ambassadors/champions
- Education providers now identify young carers and many record this on the SIMs system. Sheffield was a pilot area for the national Young carers in Schools Award, four Sheffield schools have achieved the award to date
- We are actively looking at systems/recording to improve how we capture information on young carers. Adult services are also looking

at recording the age of a care to monitor the need to offer young carers a joint assessment with the cared for person.

- No restrictive criteria is imposed for accepting children and young people referred to the local authority as young carers for needs assessments
- Sheffield Young Carers have incorporated information on new legislation in all training and materials
- Young carers have been involved in training social work students, youth work students, university outreach teams, Sheffield College, and also delivered a presentation to 0-19+ Partnership Board
- The Sheffield Health and Social Care NHS Foundation Trust now have a system to identify young carers at first assessment of service user, have produced an information pack on carers and young carers rights and have written a Carers and Young Carers Strategy, in partnership with adult and young carers, Sheffield Carers Centre and Sheffield Young Carers
- Sheffield Teaching Hospitals are in the process of developing a Carers and Young Carers Strategy and action plan, again in partnership with adult and young carers
- Sheffield Young Carers have begun training and awareness raising work within Primary Care to enable General Practitioners to identify and support young carers
- 36 Young Carer Needs Assessments were completed for children referred to the Local Authority between April 2015 and March 2016. In addition, 255 children were referred to the local authority as Young Carers. In the financial year approximately 295 Young Carers received support from the local authority, either directly or through the services provided by Sheffield Young Carers.

3 What does this mean for the people of Sheffield?

- 3.1 The Children and Families Act 2014 amended the Children Act to make it easier for young carers to get an assessment of their needs and to introduce 'whole family' approaches to assessment and support.

The assessment enables the identification of individual needs and how these affect a child or young person's wellbeing and to establish the outcomes that the person who is assessed wishes to achieve in their day-to-day life. The assessment also supports the Local Authority in determining the services, if any, that should be provided.

Assessments of young carers must recognise that each child is a unique person on their own journey to adulthood and maturity. Professionals responsible for assessing children should be able to recognise their individual developmental needs and whether the caring responsibility is appropriate for the child's age and level of maturity.

The increase in the use of the young carer's assessment in Sheffield brings many advantages. There is greater recognition of the young carers role and support with caring, especially to free them to go to school and do homework. In addition it provides an opportunity to offer information about support and services as well as providing emotional support and someone to talk to about feelings.

Although Sheffield has made significant progress in widening the use of the young carer assessment, actions are in place to progress this still further.

Young carers have been given an opportunity to feedback their views on the multi-agency action plan and progress to date. They expressed how positive they felt hearing the developments that agencies across Sheffield were making, particularly in relation to the number of young carer assessments being offered and the roll out of the young carer champion roles.

Young carers asked that future work considers feedback from family members about the support/services they have accessed or require and that we consider raising awareness of young carers in the training of teachers. These areas are now being incorporated into an updated multi-agency action plan.

There is a risk that effective planning and support for a young carer may be disrupted at the point where they have to make the transition to legal adulthood. Collaborative, joined up working between services for children and adults is especially important over this transition period. This is a key area for development over the next few months.

There is a need to enhance the integration of service provision and information sharing to improve the outcomes for children and adults alike. This will include the exploration of the current process for triggering assessment for a whole family approach.

Up skilling workers in the use of the young carer assessment and incorporating this into actions and review of the assessment is ongoing work and this will be further explored across all agencies.

4. Recommendation

4.1 That the committee:

- Note the content of this report in relation to the changes that have been made to incorporate the requirements of the Children and Families Act 2014.
- Note that the current revision of the young carer multi-agency action plan will ensure further development of the needs around the young carer assessment.

- Note and support further developments that are required in relation to:
 - (1) Improving transition arrangements for young carers into adulthood
 - (2) Statutory and voluntary services working with young carers to continue to implement the legislative requirements
 - (3) Statutory and voluntary services continuing to identify ways in which to increase the number of young carer assessments being completed
 - (4) Identifying ways in which to improve the processes that will allow for a whole family approach to caring
 - (5) The Local Authority continuing to work to strengthen the local data available in relation to young carers and their needs, which in turn will support commissioning arrangements
-